



RISEDALE
A family of learners

RISEDALE SCHOOL

Headteacher: Mrs L Greenwood - BA (Dunelm), NPQH
Hipswell, Catterick Garrison, North Yorkshire. DL9 4BD
Tel: 01748 833501 | Email: enquiries@risedale.org.uk
www.risedale.org.uk | @RisedaleSchool @RisedaleFamily

Thursday, 26th March 2026

Dear parent/carer,

SUBJECT: Headteacher's Letter - March 2026

As this spring term draws to a close, it is heartening to see the return of the lighter mornings and evenings, and, alongside these, the opportunity to spend more time outdoors. It is always great to see our young people involved in activities away from screens, such as playing sports, exercising, or being involved in extra-curricular activities.

You will no doubt be aware that the government published guidance in February relating to mobile phones in schools, stating clearly that,

"All schools should be mobile phone-free environments by default; anything other than this should be by exception only....The Department for Education (DfE) expects schools to implement a policy whereby pupils do not have access to their mobile phone throughout the school day, including during lessons, the time between lessons, breaktimes and lunchtime."



This is to reduce classroom distractions, minimise disruption, and protect pupils' mental health. Increasingly, excessive use of devices giving young people unrestricted access to the internet is being linked to a decline in young people's wellbeing, their ability to focus and a sharp increase in youth anxiety. We are starting to educate pupils about this, but both school and home need to work together to ensure young people achieve a healthy balance of time in the real world versus time online.

We are pleased to inform you that at Risedale, we have been following the guidance regarding mobile phone usage for some time now. We kindly ask for your continued support in ensuring that pupils do not have their mobile phones out during school hours. If it is difficult for them to manage this, please consider having them leave their phones at home. Thank you for your cooperation.

Next term will bring exams for Year 11, and I am hoping we will see them all attending the Easter revision days (see below) to maximise their preparation for these. Aim high, Year 11!

This Easter, we are saying goodbye to some valued members of our staff team. Mrs Dovaston, our Head of Food Technology, is retiring and will be sorely missed. Mrs Ryder, who has worked as Dining Room & Events Assistant/Relief Caretaker for the last 9 years, is also taking her well-earned retirement, having worked at Risedale for over 25 years in different capacities! Finally, Mr Yates, Deputy Headteacher, is leaving Risedale at the end of April after 9 years in post for pastures new. We thank all three colleagues for their hugely positive impact on many Risedale children and families and wish them well in their future endeavours.

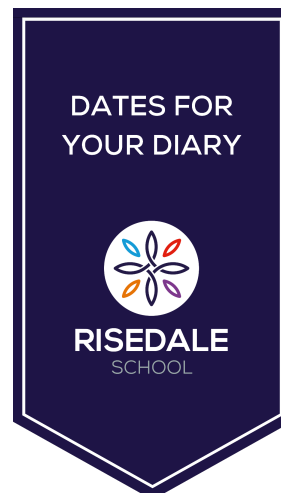
Greenwood

Mrs L Greenwood
Headteacher



Dates for Your Diary

Tuesday 31 March	Year 11 Easter Revision (Day 1)
Thursday 9 April	Year 11 Easter Revision (Day 2)
Monday 13 April	Staff Training Day
Tuesday 14 April	Start of Summer Term 1 (Pupils return)
Wednesday 15 April	Y10 Consultation Evening 3:20-5:20 pm
Friday 17 April	Y11 Geography Field Trip
20 - 22 April	Y7 Residential Trip: Beverley Park
Wednesday 22 April	PTA Meeting 4:30-5:30 pm
Friday 24 April	Leeds Rhinos Rugby Trip
27 April - 1 May	Y10 Work Experience
Friday 1 May	Y11 Bowes Museum Trip
Mon 4 May	Bank Holiday
Tues 5 May	Y10 Bowes Museum Trip
Wed 6 May	Y8 Consultation Evening 3:20-5:20 pm
9 - 10 May	Y9 DofE Bronze Expedition
11 - 13 May	Y8 Residential Trip: Beverley Park
Wednesday 13 May	Y10 University and Employability Day
18 & 19 May	Y10 GCSE PE Rock Climbing Trip
Wednesday 20 May	Y10 University and Employability Day
25 - 29 May	Half-Term Holiday
Mon 1 June	Start of Summer Term 2 (pupils and staff return)



Website Pages: [Calendar & Term Dates](#) | [Exam Information](#)

Year 11 Exam Success: Easter Revision Sessions & Resources

To support our Year 11 pupils as they prepare for their final exams, we are hosting **two targeted revision days during the Easter holidays on Tuesday, 31st March and Thursday, 9th April**. We hope as many pupils as possible will attend to take advantage of the expert guidance provided by our staff. We are incredibly grateful to our teachers for giving up their holiday time to offer this additional support.

Why These Sessions Are Vital: These teacher-led sessions are more than just "extra study." They provide focused time to tackle the most difficult topics and offer practical exam techniques that can make a significant difference in final grades. By attending, pupils benefit from a structured environment that helps them stay on track during the holiday break and ensures they don't lose momentum.

Please use the links below to access the full schedule of revision timetables and resource materials:

- **Easter Holiday:** [Y11 Easter Holiday Revision Sessions 2026](#).
- **Tutor Time, Lunchtime & After-School:** [Revision Sessions Timetable](#)
- **Presentation/Resources:** [From Y11 Parents - Preparing For Your Child's Exams event](#).

When pupils return on Tuesday, 14th April, please be aware that we will be starting on **Week 1** of the Revision & Intervention Sessions Timetable. Active attendance at these sessions and morning registrations remains a key requirement for pupils to earn their place at the Year 11 Prom.

Any questions, please contact Mr Kirkbride (Senior Teacher, KS4 Standards) at Kirkbride.M@risedale.org.uk.

Come on, Year 11 - let's get REVISING!

Attendance, Absence and Punctuality

Since January, we have worked hard to raise the profile of attendance across the school, and as such, the current whole-school attendance for this term stands at **90%**. This is a significant jump from 88.5% in the Autumn term. I would like to thank all parents and carers who have supported us with this and ask that you continue to do so into the Summer Term.

Celebrating Success

To reward 100% attendance and "Most Improved" categories, we have enjoyed successful non-uniform Fridays, a cinema trip, and an Easter Raffle.

We will continue this strategy into the Summer Term, so please look out for our rewards information in due course.

We have completed the first round of support from ImpactEd. Thank you to all parents who completed this survey. We want to be able to break down any barriers to attending school. If your child is having any issues with attendance, please contact their form tutor in the first instance for support.

The "Friday Challenge"

Can I also ask for your support on a Friday, which is the lowest attended day of the week? It would be really positive to see this change and for more pupils to be completing a full week of attendance every week.

Punctuality Matters

There will be increased monitoring of pupils who are late to school, and you may have received text messages from school about this already. The school day starts at 8:30 am, and the school gates are open from 8:20 am. Please be aware that persistent lateness can be included in attendance legal proceedings. Can I ask that you support the school by ensuring your child is on time for school every day?

★ **Be Here, Be Ready, Be Your BEST!** ★

From Senior Teacher and Attendance Lead, Mrs Cox

Website Page: [Attendance, Absence and Punctuality](#)

Child Protection and Safeguarding

The safety and wellbeing of our pupils is our top priority. If you have any concerns regarding Child Protection or Safeguarding, please contact our Designated Safeguarding Lead (DSL), Mrs Cox, immediately at DSLsafeguarding@risedale.org.uk.

In Mrs Cox's absence, please contact one of our Deputy Designated Safeguarding Leads (DDSLs): Mr Yates, Miss Burke or Lisa Smith.

Out-of-School Support

We understand that concerns may arise outside of school hours, including during the holiday times. For access to important information and contact details for relevant agencies, please visit our dedicated website page.

Website Page: [Safeguarding](#)

Meet the Safeguarding Team

DESIGNATED SAFEGUARDING LEAD (DSL)
Senior Teacher: Mrs Sarah Cox
DSLsafeguarding@risedale.org.uk

DEPUTY DESIGNATED SAFEGUARDING LEADS (DDSL)

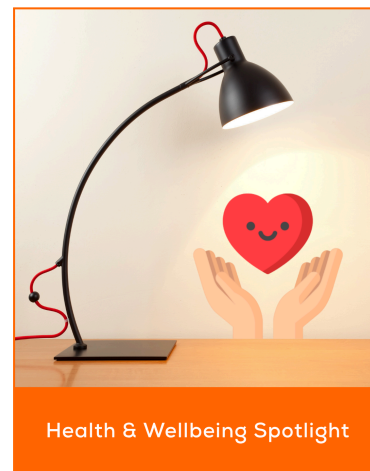
- Mr Yates
Deputy Headteacher
- Miss Burke
Senior Teacher
SENCo
- Lisa Smith
School Counsellor

Health & Wellbeing Spotlight:

Teen Wellbeing - A guide for parents/carers

From our School Counsellor, Lisa Smith

Supporting a teenager through the ups and downs of growing up can be challenging. Often, as parents, we feel the pressure to "fix" every problem. This month's spotlight resource is a brilliant guide that reminds us that the most powerful thing we can do is simply listen. It offers practical advice on creating healthy routines, starting difficult conversations, and spotting the signs when a young person might need extra help.



View the guide here: [A Parent's Guide to Teen Wellbeing](#)

Service Children's Spotlight:

From our Service Pupil Manager, Dr Ellis

As we reach the end of this term, we say a fond goodbye to a number of our Service pupils and their families who are moving on to new chapters. We want to take this opportunity to thank you for being such a valued part of our school community. We wish you all the very best in your next adventures and every success in all your future endeavours.



Month of the Military Child:

April is the Month of the Military Child, and we are incredibly excited to celebrate our Service pupils and families. We have a packed schedule of activities planned to show our appreciation for our military community. Keep an eye out—more detailed information will follow soon!

Key Reminders: Our Service Pupil Drop-in sessions take place every Tuesday (KS3) and Thursday (KS4) at lunchtime in Library 2.

Leaving Us? If you are due to be posted out of the area and will be leaving Risedale, please do get in touch as early as possible so that we can facilitate a smooth transition out of the school.

Contact Information: If you have any questions, please email our Service Pupil Manager, Dr Ellis, at: Ellis.S@risedale.org.uk.

More information is available on our dedicated **Website Page:** [Service Children](#).

Uniform Bank

The Risedale School Uniform Bank offers free, second-hand uniform to families. To request items, please email uniformbank@risedale.org.uk with the sizes needed. We also welcome donations of clean, unwanted/preloved uniform at the school reception. Our Uniform Bank is a new venture, and stock is currently limited. We hope that with your help, this service will grow and become an invaluable resource for the Risedale Family.





We Need YOU! Join Our New PTA and Make a Difference

We're putting out a fresh call for more parents and carers to join our new **Parent Teacher Association (PTA)**! We have now held our first successful fundraising events, and we are growing in number! The PTA is a fantastic way for us to work together, enriching our school community and enhancing the experience for all our pupils.

How You Can Help:

The PTA is your chance to directly contribute to our school community. We are looking for enthusiastic individuals to help us with everything from **planning fun school events** to **supporting essential fundraising efforts**. By joining, you can:

- **Make a real difference** to the resources & opportunities available to our pupils/your children
- **Connect with other parents** and build a stronger network
- **Be a voice for your child** and help shape their school experience.

Whether you have a lot of time to give or just a little, your contribution would be invaluable.

Let's work together to help every pupil be the **BEST** version of themselves, embodying our school's values of **RESPONSIBILITY**, **RESPECT**, **RESILIENCE**, and **RELATIONSHIPS**.

Ready to Get Involved?

If you're interested in learning more or would like to be involved, please email us today at PTA@risedale.org.uk.

NEXT MEETING: Wednesday, 22nd April 2026 at 4:30 pm in school

Job Vacancies at Risedale School

Assistant Headteacher (Personal Development)

- **Salary/Grade:** Leadership Pay Scale
- **Contract:** Established / Permanent (1.0 FTE)
- **Start Date:** September 2026
- **Closing Date:** 23:59, Sunday 19th April 2026
- **Interview Date:** 29th/30th April 2026 (TBC)

APPLY TODAY: [Assistant Headteacher Risedale School](#)

RISEDALE SCHOOL
A family of learners

Job Vacancy

ASSISTANT HEADTEACHER

APPLY TODAY

RISEDALE SCHOOL
Hippwell
Catterick Garrison
North Yorkshire DL9 4BD
01748 833501
www.risedale.org.uk
enquiries@risedale.org.uk
Headteacher: Mrs L Greenwood (BA, NPQH)
11-16 Comprehensive School

Community Notices

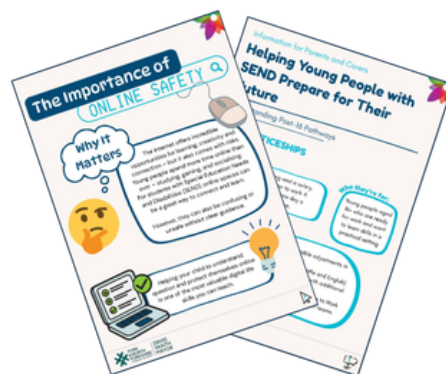
New Support Resources for SEND Families

In partnership with the Combined Authority and NYBEP, we are pleased to share two new Parent and Carer Packs specifically designed to support families of young people with SEND. These resources provide straightforward, trusted information to help you navigate the transition into further education while staying secure in the digital world.

Whether you are discussing future career options or ensuring your child can explore the internet with confidence, these guides offer practical advice to support those conversations at home.

You can access the packs directly via the links below:

- [Parent and Carers - The Importance of Online Safety](#)
- [Helping Young People with SEND Prepare for Their Future](#)



Supporting Service Children with SEND: A Directory for Families and Professionals

This directory brings together local SEND services and support for children from Armed Forces families in one place—making it easier for families and professionals to find the right support when it's needed most.

You can access the directory via the link below:

- [Supporting Service Children with SEND: A Directory for Families and Professionals](#)



Mentoring Opportunity for Year 11 Girls: Women Unlocked

We are pleased to share an excellent opportunity for our **Year 11 girls** as they prepare for their transition from Risedale. The "Women Unlocked" Mentoring Programme is currently inviting applications from young women (aged 16-24) across North Yorkshire who are keen to build their personal skills and make a positive impact on gender equality.

This programme offers tailored, one-to-one mentoring focused on:

- Developing CVs and interview skills.
- Building confidence and planning future "next steps".
- Connecting with a group of young women working together to create real change.





The application deadline is Friday, 10th April 2026. Pupils can find the application form online at <https://forms.gle/dZC3jKZcGyAGD53a6> or contact Emily at Emily@leaders-unlocked.org for more information.

Meningitis Vaccinations (MenACWY) – Reminder

We would like to remind parents and carers of the recent information shared regarding meningococcal disease and the vaccinations available to protect our pupils.

- **Year 9 & Catch-ups:** The MenACWY vaccine is routinely offered in Year 9. If your child missed theirs, catch-up appointments are available locally.

- **Action Required:** If your child is not yet vaccinated, please contact the Vaccination UK team to complete a consent form.
- **Full Details:** You can read the original letter and access educational resources here: [Vaccination UK Letter](#).

MENINGITIS + SEPTICAEMIA

Meningitis is a serious condition where the protective layers around the brain and spinal cord become inflamed. Septicaemia is when the bacteria enter the bloodstream to cause blood poisoning. They can happen to anyone, so its important to know the symptoms and risks.

Early symptoms, such as fever, vomiting, aches, muscle pain, cold hands and feet and headaches, can look similar to common illnesses like colds or flu. But someone with meningitis or septicaemia will usually become seriously ill in a matter of hours. That's why it's crucial to keep checking on anyone who is unwell.

MENINGITIS SYMPTOMS?

- fever
- a very bad headache (this alone is not a reason to get medical help)
- vomiting
- stiff neck
- dislike of bright lights
- rash (DO NOT wait for a rash to appear before seeking medical advice)
- confusion, delirium
- severe sleepiness, losing consciousness
- fits

SEPTICAEMIA SYMPTOMS?

- fever and shivering
- severe pains and aches in limbs and joints
- vomiting
- very cold hands and feet
- pale or blotchy skin
- rapid breathing
- diarrhoea and stomach cramps
- red or purple 'bruised' or blotchy rash on skin that does not fade under pressure - do the glass test. On dark skin, check paler areas of the skin, such as the palms of the hands, soles of the feet, inside the mouth (roof), and the eyelids
- difficulty walking or standing
- severe sleepiness, losing consciousness

If you become worried about yourself, your child, or a friend, particularly if symptoms are getting worse, seek medical help urgently.

EARLY TREATMENT CAN BE LIFE-SAVING.


Electric Bikes and the Law: Are You Legal?

We are sharing an important guide from North Yorkshire Police regarding the rules and laws for riding electric bikes (e-bikes).

Whether you already own one or are considering a purchase for your child, it is vital to understand what makes an e-bike road-legal and where they can be safely used.


Please take a moment to review the full leaflet for all the essential safety and legal information.

 **Read the full guide here:** <https://bit.ly/4d80GzB>



Electric bikes and the law

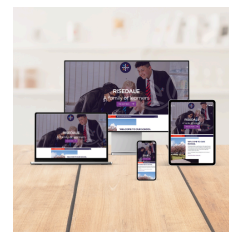
There are rules that have to be met to ride on UK public roads, are you legal?



General Reminders for Risedale School

School Website

It is recommended that all parents familiarise themselves with the school's website www.risedale.org.uk. There, you can find lots of important information such as [calendar and term dates](#), [letters to parents](#), [uniform](#), [policies](#), [exam information](#), [wellbeing](#) and our [latest news](#), to name but a few.



Uniform

At Risedale, we take great pride in our school uniform and strive to make it as affordable as possible by limiting the number of branded items we offer. Our website provides guidance on the [Uniform](#) policy, which is an integral part of our school's identity. It is mandatory for all pupils to wear the correct uniform at all times. If you have any questions or concerns about the uniform, please contact your child's form tutor as the primary point of contact.



MyChildAtSchool (MCAS) Parent Portal

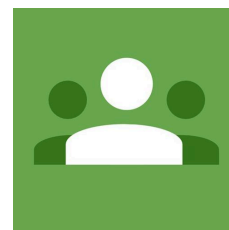
[MyChildAtSchool \(MCAS\)](#) is an online portal for parents that enables you to manage all school payments and view your child's performance in real-time via the web or app. Please check MCAS regularly, as this facility allows you to access your child's **timetable**, **attendance**, **behaviour**, and **reports**, as well as providing a secure way to **top up dinner money** and pay for **school trips and clubs** whenever you wish to see the latest available information. Parents can access MCAS via the [website](#) or can use the MCAS App, which can be downloaded from the App/Google Play Store.



When your child joins Risedale, you will be sent details to allow you to access your account. If you have forgotten your Parent Login details, click [HERE](#).

Google Classroom Parent Alerts

Parents can receive email summaries showing their child's progress in Google Classroom. To become a 'Google Guardian', simply complete the ['Google Classroom Summary Alerts'](#) form, and our IT team will set this up for you.



Equipment and Chromebooks

Please ensure your child has everything they need for school to start the day positively and be prepared to learn.



- A **pencil case** containing the following:
 - **black**, **blue**, and **red** biros.
 - pencil, ruler and eraser.
- **Planner:** Required daily (replacement cost £2 if lost).
- **PE Kit:** On timetabled days.
- **Reading Book:** KS3 only.
- **Chromebook:** Fully charged and in its protective case (Years 8-11 only).

